

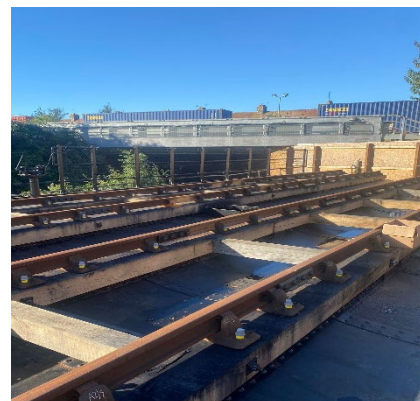
### What a difference: Rewley Road Swing Bridge



It's been all hands to the deck over the past few weeks, and as the final painting is completed, we have begun to piece everything back together, placing the longitudinal and lateral timbers on top held together by the tie bars onto which are bolted the metal chairs into which the 95lb bull head rails sit.



(Swing bridge, 2018)



(Swing bridge, October 2021)

And with the work to the bridge nearly complete we will move on to repair the north abutment and are delighted to receive promise of a grant from the FCC Communities Foundation with the support of Lucy Group Ltd and the Cooper Charitable Trust which is crucial to our ability to landscape the area.

Finally, thank you to David Mather and Tom Hassall for their help over the Oxford Open Doors weekend in September seeing nearly 200 visitors in four hours.

Our special thanks go to [Historic England](#), [Network Rail](#), the [Railway Heritage Trust](#) and our other sponsors for making this restoration possible, and to [The Morton Partnership](#), [Avon Construction](#) and [Oxford Archaeology](#) for their expert work.

**Be part of the Rewley Road Swing Bridge story join us today and donate.**

**Best wishes from the OPT Team.**