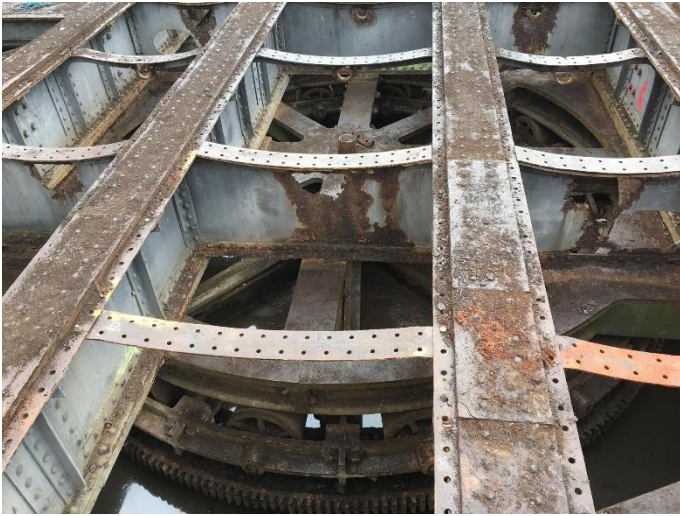


Rewley Road Swing Bridge Restoration Update

We are now back on site, with everything in full swing and much progress being made.



March 2021. All the defective metalwork removed.

The eagle-eyed may have spotted that the Swing Bridge now sits 60cm higher than usual. Lifting the Bridge was a difficult but critical task, happening just before Easter to great excitement. It means that the team can now get access to the turning mechanism underneath.



Easter 2021. Jacked up by 60cm.



April 2021. The turning mechanism underneath.

And now the blasting works are set to begin. This is an absolutely necessary part of the project, as it will smooth out any rough surfaces and prepare the Bridge for painting. Those of you who live nearby may notice an increase in noise whilst this takes place and OPT are hugely grateful to the residents of Rewley Park for your understanding.

Thanks go to [Historic England](#), [Network Rail](#), the [Railway Heritage Trust](#) and our other sponsors, without whom this restoration would not be possible; and to [The Morton Partnership](#), [Avon Construction](#) and [Oxford Archaeology](#) for their fantastic work.

We look forward to sending you more updates soon.

Best wishes from the OPT Team

Please support this project by [donating](#) or [joining us](#). Find out more about the Bridge and Oxford's part in the construction of railways across Britain by visiting the [OPT website](#).