

Outdoor Alphabet Hunt

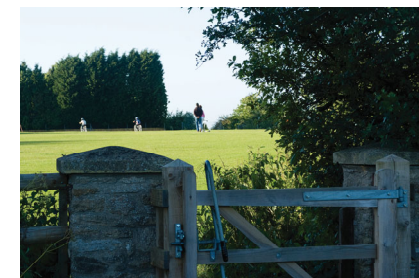
Whilst walking can you spot things beginning with each letter of the alphabet?

A		N	
B		O	
C		P	
D		Q	
E		R	
F		S	
G		T	
H		U	
I		V	
J		W	
K		X	
L		Y	
M		Z	

Self-guided walks **OXFORD** PRESERVATION TRUST

A walk around OPT land at Kennington

This circular walk is about 3¾ miles and takes about two hours at a steady pace.



Getting to the start

This walk starts and ends at Kennington Memorial Field.

Bus Route: Buses from the city centre to Kennington by City 35. Check times with the Oxford Bus Company.

Parking: Car Park in the Pavilion Car Park (OX1 5RT)

Share your experience

Twitter: [@OxfordPresTrust](#) or Facebook

1. From the carpark, walk in front of the Pavilion and through the small gate into the Memorial Field. At the entrance, notice the plaque with the names of the servicemen that this field commemorate.

2. Through the gate, bear to the right past the board and follow the path to the western edge. Follow the path to the brow of the steep slope. In front of you is Radley Large Wood (to extend your walk further by crossing the footbridge at the bottom of the Memorial Field). If you continue to follow the path bearing left, round the scrub and continue straight on to the kissing gate at the end of the field.

3. Through the kissing gate, carefully cross the road and turn right down The Avenue. Walk along the roadside path.

4. Turn left onto Sandford Lane, walking carefully down to the riverside. Be aware that there is no pedestrian path at points along this lane.

5. Before the river, take the stile on your left and walk along the permissive path.

6. Cross over one footbridge. Look to your right and see a view of the Sandford Hydroelectric Plant with three Archimedes Screws. Continue over the next footbridge and follow the path bearing right. Look out for the fish pass alongside the Hydro (a route for fish to get upstream).

7. Follow the path through more fields, going through a kissing gate. (always keep the river on your right). At the top of the field you will find the Fishes Gate (designed by Paul Amey). Bear left onto the Sustrans Cycle path.

8. Continue along this path, noting that where the path gets narrow (just after the pedestrian railway bridge) newts and glow worms may be spotted.

9. Stay on the Sustrans cycle path until the end (meeting Sandford Lane). Turn right and walk back up Sandford Lane to retract your steps.

10. Turn right back up The Avenue and then left into the Memorial Field again. This time when the path branches off, take the path to the right and walk up the gentle slope back to the starting gate.

