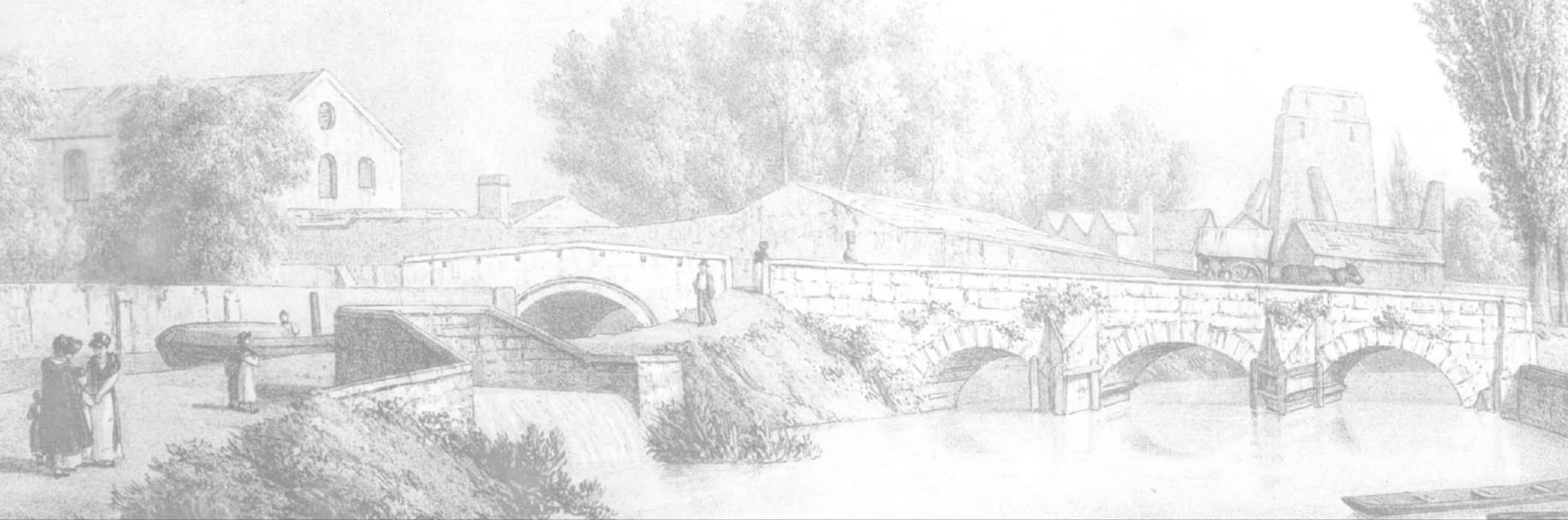


CANAL

The area changed radically with the arrival of New Road in 1769-70, a turnpike route improving access to the west over a new bridge (Pacey's bridge) cutting off the northern section of the castle ditch from the castle.



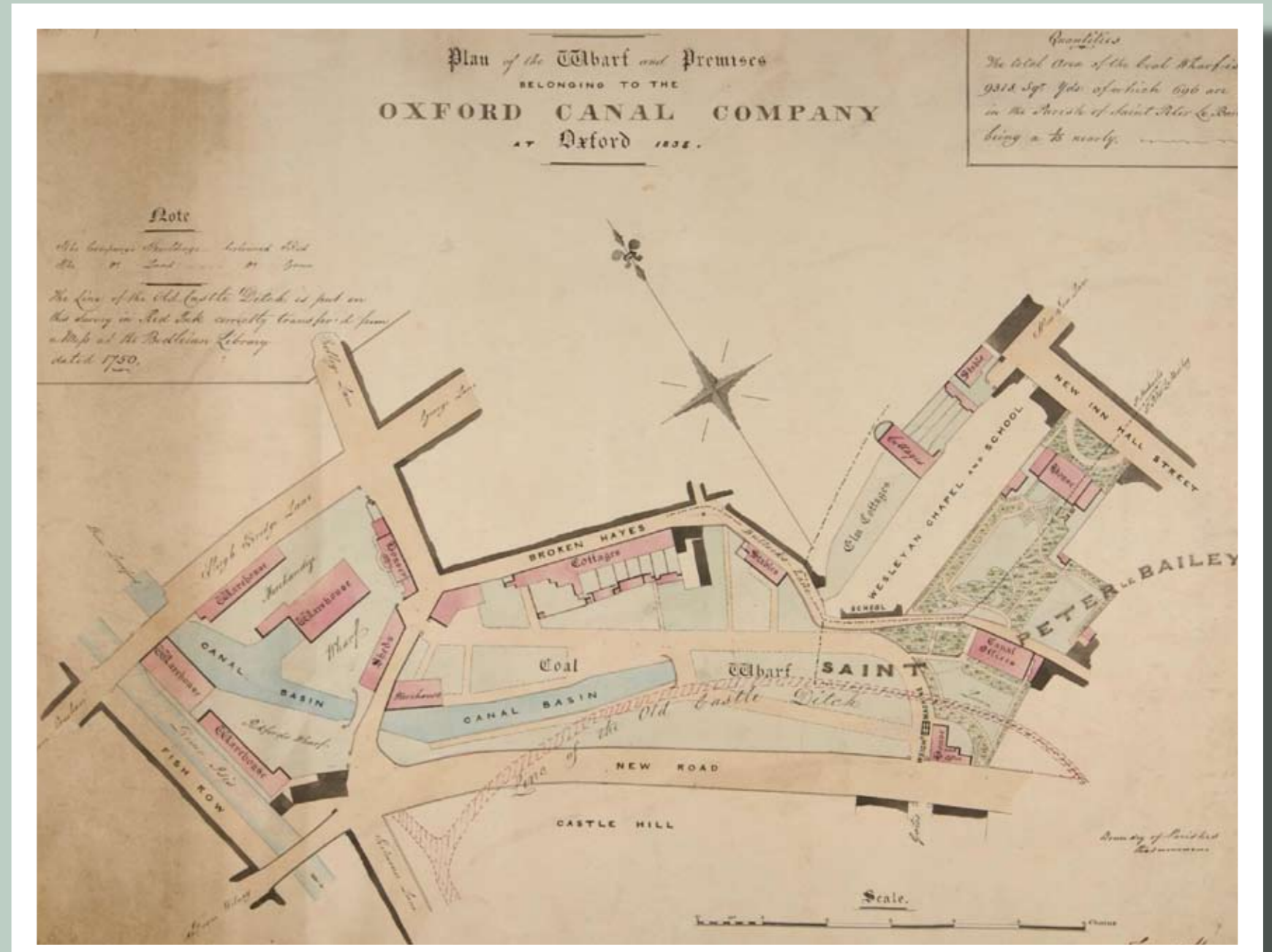
LOSS OF A BUILDING
 To the Editor of "The Oxford Times"
 Sir.—No one has bemoaned the loss of one of Oxford's finest buildings. A great brick and stone structure standing on noble arches has been swept away to form a car park!
 The building was situated between Park End Street and Hythe Bridge Street just opposite Nuffield College. That it was not a university building, that it was of brick, and that its purpose has ceased, presumably were the reasons for the demolition. But what fine proportion and noble form were embodied in it.
 One feels that the threatened loss of so great an amenity ought to have been referred to people or bodies likely to feel the importance of the matter. As no mention seems to have been made from any quarter either before or after the fateful deed of destruction, one can only presume one's view is solitary; that most people do not mind or that the aesthetic qualities of the building were less real than imaginary. My view is that Oxford has suffered a major aesthetic loss. I am sure there must be a few who are sad about it. — Yours faithfully,
THOMAS RAYSON.
 29, Beaumont Street,
 Oxford.

Letter to *Oxford Times* from Thomas Rayson, Oxford Architect, 1955 concerning loss of the Goods Warehouse.

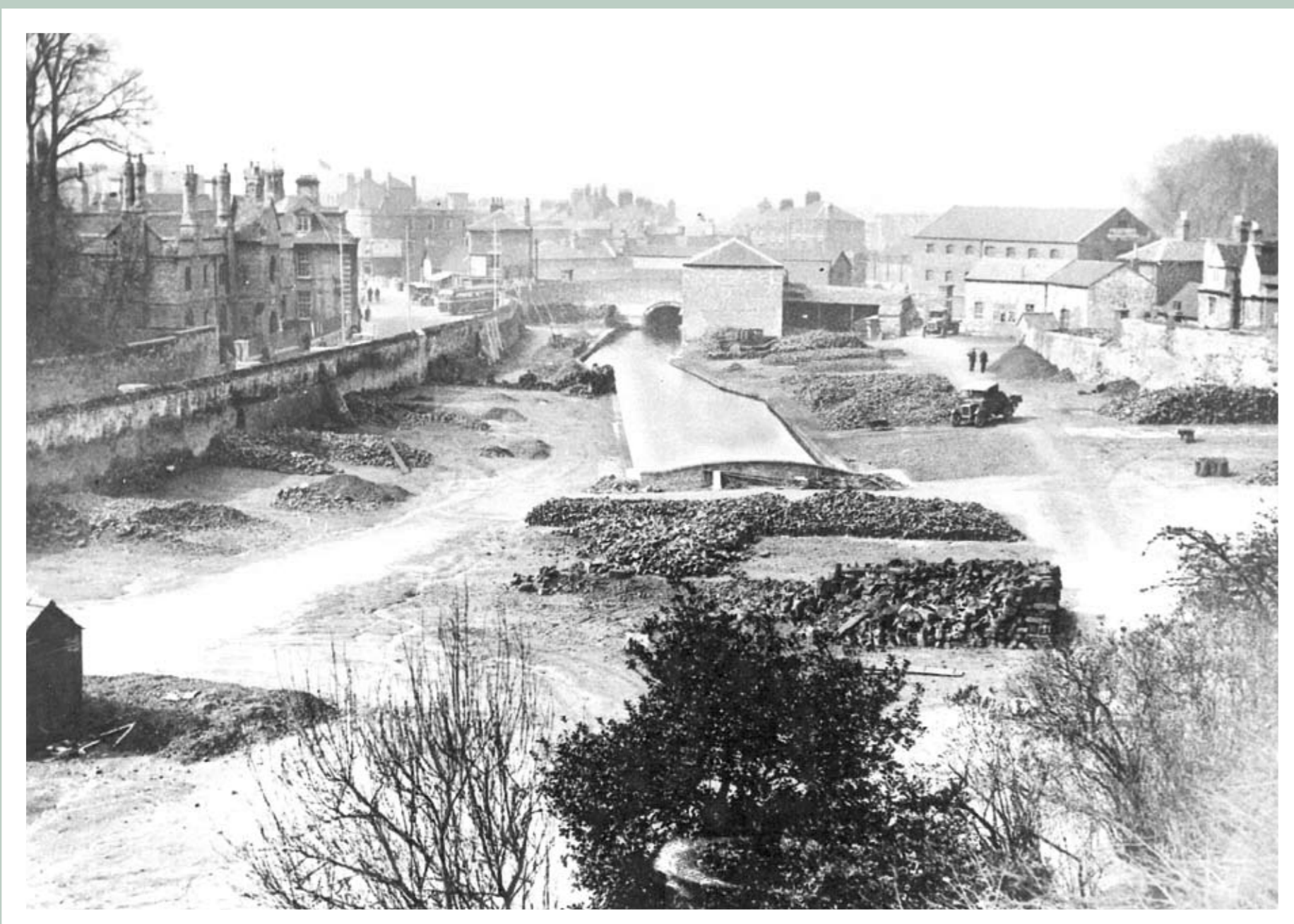
Oxford Canal Company Wharf and Premises, 1838 (*Warwickshire Record Office*)

The canal had started out from Warwickshire in 1769 and was opened to traffic in Oxford on New Year's Day, 1790, welcomed by the bells of St Thomas's. Felons from the County Gaol at Oxford Castle were contracted out by the keeper, Daniel Harris, to the Canal Company to build the basin and wharfs. The Coal Wharf followed the line of the silted up castle ditch.

Boats entered through a bridge underneath Worcester Street and a fine stone and brick warehouse was built in the Worcester Street wharf in 1795 to protect dry goods. Offices and a handsome Doric Temple style Wharf House (now the Master's Lodgings for St Peter's College) were built along with further warehouses on both sides of the canal bringing industry into the heart of the city.



Basin and goods warehouse prior to demolition and infilling, 1955 (*Oxfordshire Photographic Archive*)



Coal Wharf and New Road looking west, c 1920 (*Oxfordshire Photographic Archive*)

